

Kingdom Harvest LLC

412 N Main ST  
Hendersonville, NC 28792  
shelle@kingdomharvest.com  
828-243-8778

Sample: 07-11-2022-22141

Sample Received: 07/11/2022;  
Report Created: 07/15/2022; Expires: 07/15/2023

THC-9 25mg  
Ingestible, Soft Chew



**0.188%**  
Total THC

**0.188%**  
Δ-9 THC

**23.212 mg/unit**  
Total Cannabinoids

**ND mg/unit**  
Total CBD

## Cannabinoids

Complete

(Testing Method: HPLC, CON-P-3000)

Date Tested: 07/11/2022

Analyte	LOD	LOQ	Mass	Mass
	mg/unit	mg/unit	mg/unit	mg/g
Δ-8-Tetrahydrocannabinol (Δ-8 THC)	1.237	1.844	ND	ND
Δ-9-Tetrahydrocannabinol (Δ-9 THC)	1.237	1.844	23.212	1.876
Δ-9-Tetrahydrocannabinolic Acid (THCA-A)	1.237	1.844	ND	ND
Δ-9-Tetrahydrocannabiphorol (Δ-9-THCP)	1.237	1.844	ND	ND
Δ-9-Tetrahydrocannabivarin (Δ-9-THCV)	1.237	1.844	ND	ND
Δ-9-Tetrahydrocannabivarinic Acid (Δ-9-THCVA)	1.237	1.844	ND	ND
R-Δ-10-Tetrahydrocannabinol (R-Δ-10-THC)	1.237	1.844	ND	ND
S-Δ-10-Tetrahydrocannabinol (S-Δ-10-THC)	1.237	1.844	ND	ND
9R-Hexahydrocannabinol (9R-HHC)	1.237	1.844	ND	ND
9S-Hexahydrocannabinol (9S-HHC)	1.237	1.844	ND	ND
Tetrahydrocannabinol Acetate (THCO)	1.237	1.844	ND	ND
Cannabidiol (CBDV)	1.237	1.844	ND	ND
Cannabidiol (CBD)	1.237	1.844	ND	ND
Cannabidiolic Acid (CBDA)	1.237	1.844	ND	ND
Cannabigerol (CBG)	1.237	1.844	ND	ND
Cannabigerolic Acid (CBGA)	1.237	1.844	ND	ND
Cannabinol (CBN)	1.237	1.844	ND	ND
Cannabinolic Acid (CBNA)	1.237	1.844	ND	ND
Cannabichromene (CBC)	1.237	1.844	ND	ND
Cannabichromenic Acid (CBCA)	1.237	1.844	ND	ND
<b>Total</b>			<b>23.212</b>	<b>1.876</b>

Total THC = THCa \* 0.877 + Δ9-THC; Total CBD = CBDA \* 0.877 + CBD; LOQ = Limit of Quantitation; ND = Not Detected.

Total THC Measurement of Uncertainty: ± 0.040%  
Total CBD Measurement of Uncertainty: ± 2.000%  
THCO potency analysis does not designate quantitative specificity of Δ-8-THCO and Δ-9-THCO isomers

Unit Size: 12.373 g; Unit: 1 Gummy



New Bloom Labs  
6121 Heritage Park Drive, A500  
Chattanooga, TN 37416  
(844) 837-8223  
TN DEA#: RN0563975

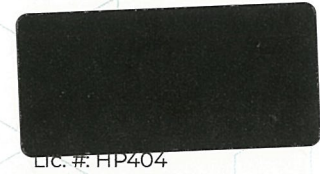
*Natalie Siracusa*  
Natalie Siracusa  
Laboratory Director

New Bloom Labs  
10606 Shady Trail, 105  
Dallas, TX 75520  
(844) 837-8223  
TX DEA#: RN0594653

Powered by  
relIMS  
info@relims.com

**D9 Gummy**

 Sample ID: SA-12012021-5885  
 Batch: 1  
 Type: Finished Products  
 Matrix: Edible - Candy

 Received: 12/06/2021  
 Completed: 12/20/2021


Lic. #: HP404

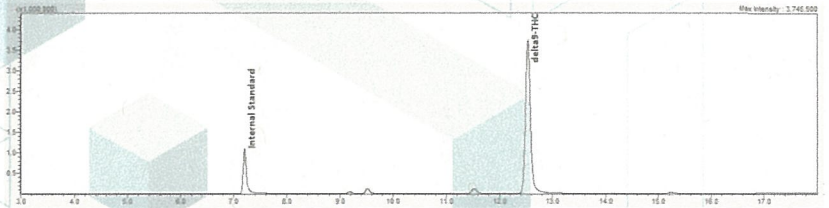

**Summary**

Test	Date Tested	Status
Cannabinoids	12/20/2021	Tested

**Cannabinoids by HPLC-PDA, LC-MS/MS, and/or GC-MS/MS**

<b>0.177 %</b>	<b>0.177 %</b>	<b>0.180 %</b>	<b>Not Tested</b>	<b>Not Tested</b>	<b>Yes</b>
Total Δ9-THC	Δ9-THC	Total Cannabinoids	Moisture Content	Foreign Matter	Internal Marker Recovered

Analyte	LOD (%)	LOQ (%)	Result (%)	Result (mg/unit)
CBC	0.00009	0.00028	ND	ND
CBCA	0.00018	0.00054	ND	ND
CBCV	0.00006	0.00018	ND	ND
CBD	0.00008	0.00024	0.000840	0.102
CBDA	0.00004	0.00013	ND	ND
CBDV	0.00006	0.00018	ND	ND
CBDVA	0.00002	0.00006	ND	ND
CBG	0.00006	0.00017	<LOQ	<LOQ
CBGA	0.00005	0.00015	ND	ND
CBL	0.00011	0.00033	ND	ND
CBLA	0.00012	0.00037	ND	ND
CBN	0.00006	0.00017	0.000470	0.0569
CBNA	0.00006	0.00018	ND	ND
Δ8-THC	0.0001	0.00031	ND	ND
Δ9-THC	0.00008	0.00023	0.177	21.4
Δ9-THCA	0.00008	0.00025	ND	ND
Δ9-THCV	0.00007	0.00021	0.00170	0.206
Δ9-THCVA	0.00006	0.00019	ND	ND
<b>Total Δ9-THC</b>			<b>0.177</b>	<b>21.4</b>
<b>Total CBD</b>			<b>0.000840</b>	<b>0.102</b>
<b>Total</b>			<b>0.180</b>	<b>21.8</b>



ND = Not Detected; NT = Not Tested; LOD = Limit of Detection; LOQ = Limit of Quantitation; RL = Reporting Limit; Δ = Delta; Total Δ9-THC = Δ9-THCA \* 0.877 + Δ9-THC; Total CBD = CBDA \* 0.877 + CBD;



 Generated By: Ryan Bellone  
 Commercial Director  
 Date: 12/20/2021



 Tested By: Scott Caudill  
 Senior Scientist  
 Date: 12/20/2021

 ISO/IEC 17025:2017 Accredited  
 Accreditation #108651




DEA No. RA0571996  
FL License # CMTL-0003  
CLIA No. 10D1094068

# Certificate of Analysis

Compliance Test

**KINGDOM HARVEST**  
412 NORTH MAIN STREET  
HENDERSONVILLE, NC 28792

Batch # 00100  
Batch Date: 2022-07-04  
Extracted From: hemp

Test Reg State: Florida

Production Facility: earthy  
Production Date: 2022-07-04

Order # KJN220714-060001  
Order Date: 2022-07-14  
Sample # AADC639

Sampling Date: 2022-07-17  
Lab Batch Date: 2022-07-17  
Completion Date: 2022-07-22

Initial Gross Weight: 15.935 g  
Net Weight: 9.535 g

Number of Units: 1  
Net Weight per Unit: 9535.000 mg



Potency  
Tested

Product Image

**Potency 21 (LCUV)**  
Specimen Weight: 1529.600 mg

Tested  
SOP13.002 (LCUV)

## Potency Summary

Total THC None Detected	Total CBD None Detected
Total CBG None Detected	Total CBN None Detected
Other Cannabinoids 0.359%	Total Cannabinoids per Gummy 34.230mg

Pieces For Panel: 2

Analyte	Dilution (1:n)	LOD (%)	LOQ (%)	Result (mg/g)	(%)
Delta-8 THC-O Acetate	100.000	2.70E-5	0.0003	3.3590	0.3359
Delta-9 THC-O Acetate	10.000	7.70E-5	0.0003	0.1460	0.0146
CBT	10.000	2.00E-4	0.0015	0.0640	0.0064
Delta-8 THC	10.000	2.60E-5	0.0015	0.0250	0.0025
THCVA	10.000	4.70E-5	0.0015	<LOQ	
THCV	10.000	7.00E-6	0.0015	<LOQ	
THCA	10.000	3.20E-5	0.0015	<LOQ	
CBC	10.000	1.80E-5	0.0015	<LOQ	
Exo-THC	10.000	2.30E-4	0.0015	<LOQ	
CBCA	10.000	1.07E-4	0.0015	<LOQ	
Delta-8 THCv	10.000	4.00E-5	0.0015	<LOQ	
CBNA	10.000	9.50E-5	0.0015	<LOQ	
CBN	10.000	1.40E-5	0.0015	<LOQ	
CBL	10.000	3.50E-5	0.0015	<LOQ	
CBGA	10.000	8.00E-5	0.0015	<LOQ	
CBG	10.000	2.48E-4	0.0015	<LOQ	
CBDVA	10.000	1.40E-5	0.0015	<LOQ	
CBDV	10.000	6.50E-5	0.0015	<LOQ	
CBDa	10.000	1.00E-5	0.0015	<LOQ	
CBD	10.000	5.40E-5	0.0015	<LOQ	
Delta-9 THC	10.000	1.30E-5	0.0015	<LOQ	

Xuelli Gao  
Ph.D., DABT  
Lab Toxicologist

Aixia Sun  
D.H.Sc., M.Sc., B.Sc., MT (AAB)  
Lab Director/Principal Scientist



Definitions and Abbreviations used in this report: Total CBD = CBD + (CBD-A \* 0.877), \*Total CBDV = CBDV + (CBDVA \* 0.87), Total THC = THCA-A \* 0.877 + Delta 9 THC, Total THCV = THCV + (THCVA \* 0.87), CBG Total = (CBGA \* 0.877) + CBG, CBN Total = (CBNA \* 0.877) + CBN, Total CBC = CBC + (CBCA \* 0.877), Total THC-O-Acetate = Delta 8 THC-O-Acetate + Delta 9 THC-O-Acetate, Other Cannabinoids Total = Total Cannabinoids - All the listed cannabinoids on the summary section, Total Detected Cannabinoids = Delta8a10a-THC + Delta8-THC + Total CBN + CBT + Delta8-THCV + Total CBG + Total CBD + Total THCv + CBL + Total THC + Total CBC + Total CBDV + Delta10-THC + Total THC-O-Acetate, Analyte Details above show the Dry Weight Concentrations unless specified as 12% moisture concentration. (mg/ml) = Milligrams per Milliliter, LOQ = Limit of Quantitation, LOD = Limit of Detection, Dilution = Dilution Factor (ppb) = Parts per Billion, (%) = Percent, (cfu/g) = Colony Forming Unit per Gram (cfu/g) = Colony Forming Unit per Gram, LOD = Limit of Detection, (µg/g) = Microgram per Gram (ppm) = Parts per Million, (ppm) = (µg/g), (aw) = aw (area ratio) = Area Ratio, (mg/Kg) = Milligram per Kilogram, \*Measurement of Uncertainty = +/- 10%

This report shall not be reproduced, without written approval, from ACS Laboratory. The results of this report relate only to the material or product analyzed. Test results are confidential unless explicitly waived otherwise. Accredited by a third-party accrediting body as a competent testing laboratory pursuant to ISO/IEC 17025 of the International Organization for Standardization.